



India Meteorological Department  
Earth System Science Organisation  
(Ministry of Earth Sciences)

**BULLETIN NO. : 07 (BOB 08/2017)**

**TIME OF ISSUE: 1415 HOURS IST**

**DATED: 07.12.2017**

**FROM: INDIA METEOROLOGICAL DEPARTMENT (FAX NO. 24643965/24699216/24623220)**

**TO: CONTROL ROOM, NDM, MINISTRY OF HOME AFFAIRS (FAX.NO. 23093750)**

**CONTROL ROOM NDMA (FAX.NO. 26701729)**

**CABINET SECRETARIAT (FAX.NO.23012284)**

**PS TO HON'BLE MINISTER FOR S & T AND EARTH SCIENCES (FAX NO.23316745)**

**SECRETARY, MOES, (FAX NO. 24629777)**

**SECRETARY, DST (FAX NO. 26863847/-2418)**

**H.Q. (INTEGRATED DEFENCE STAFF AND CDS) (FAX NO. 23005137/23005147)**

**DIRECTOR GENERAL, DOORDARSHAN (23385843)**

**DIRECTOR GENERAL, AIR (25843825)**

**PIB MOES (FAX NO. 23389042)**

**UNI (FAX NO. 23355841)**

**D.G. NATIONAL DISASTER RESPONSE FORCE (NDRF) (FAX NO. 26105912)**

**DIRECTOR, PUNCTUALITY, INDIAN RAILWAYS (FAX NO. 23388503)**

**CHIEF SECRETARY, GOVT. OF TAMILNADU (FAX NO. 044-25672304)**

**CHIEF SECRETARY, GOVT. OF ANDHRA PRADESH (FAX NO. 040-23456137)**

**CHIEF SECRETARY, GOVT. OF PUDUCHERRY (FAX NO. 0413-2337575)**

**CHIEF ADMINISTRATOR, ANDAMAN AND NICOBAR ISLANDS (FAX NO. 03192-232656)**

**CHIEF SECRETARY, GOVT. OF ODISHA (FAX NO. 0674-2536660)**

**CHIEF SECRETARY, GOVT. OF WEST BENGAL (FAX NO. 033-22144328)**

**Sub: Depression over Southeast Bay of Bengal**

The **Depression** over southeast Bay of Bengal & neighbourhood moved north-northwestwards with a speed of about 20 kmph during past 6 hours and lay centred at 1130 hrs IST of today, the 07 December, 2017 near Latitude 12.2° N and Longitude 87.9 °E, about 840 km south-southeast of Gopalpur and 850 km to the east-southeast of Machillipatnam. The system is very likely to move north-northwestwards and reach north Andhra Pradesh and south Odisha coasts around 9<sup>th</sup> December morning. The system is likely to intensify further into a deep depression during next 24 hours. However, there is a probability of slight weakening of the system when it reaches near north Andhra Pradesh and south Odisha coasts around 9<sup>th</sup> December morning.

**Warnings:**

**Heavy Rainfall:**

- Light to moderate rainfall at most places over Andaman Islands and at a few places over Nicobar Islands very likely during next 24 hours.
- Rainfall at most places with heavy falls at isolated places very likely over north Andhra Pradesh on 8<sup>th</sup> and 9<sup>th</sup>, over Odisha during 8<sup>th</sup> to 10<sup>th</sup>, over coastal districts of West Bengal on 8<sup>th</sup> December, 2017.
- **Wind:**
  - Squally winds speed reaching 40-50 kmph gusting to 60 kmph very likely over and around Andaman Islands during next 24 hours and decrease thereafter.
  - Squally winds speed reaching 40-50 kmph gusting to 60 kmph very likely to prevail along and off north Andhra Pradesh and Odisha coasts from 7<sup>th</sup> evening to 9<sup>th</sup> December morning and decrease thereafter.

**Spatial rainfall distribution: Isolated: <25%, A few: 26-50%, Many: 51-75%, Most: 76-100%**

**Rainfall amount (mm): Heavy rain: 64.5 – 115.5, Very heavy rain: 115.6 – 204.4, Extremely heavy rain: 204.5 or more.**

**Sea Condition:**

- Sea condition would be rough to very rough around Andaman Islands during next 24 hours.
- Sea condition would be rough to very rough along and off north Andhra Pradesh and Odisha coasts from 7<sup>th</sup> evening to 9<sup>th</sup> December morning.

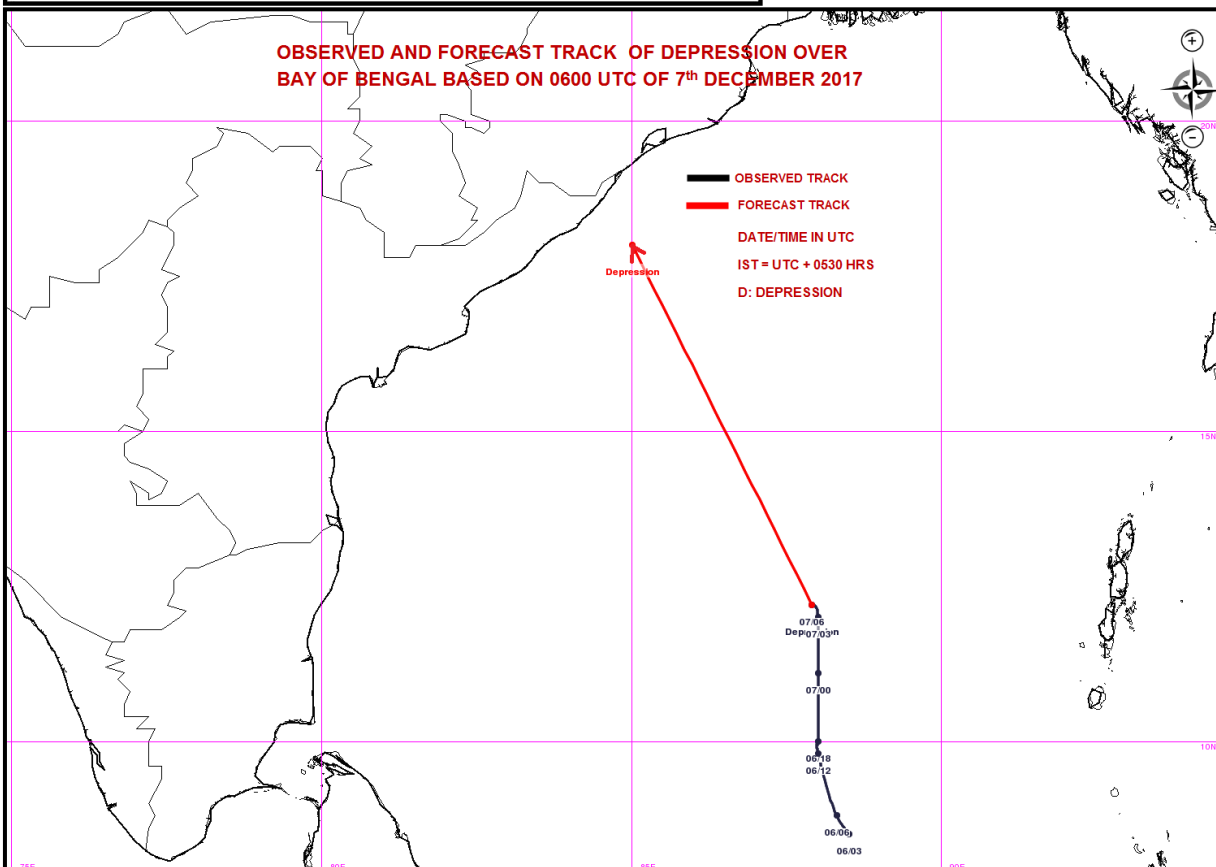
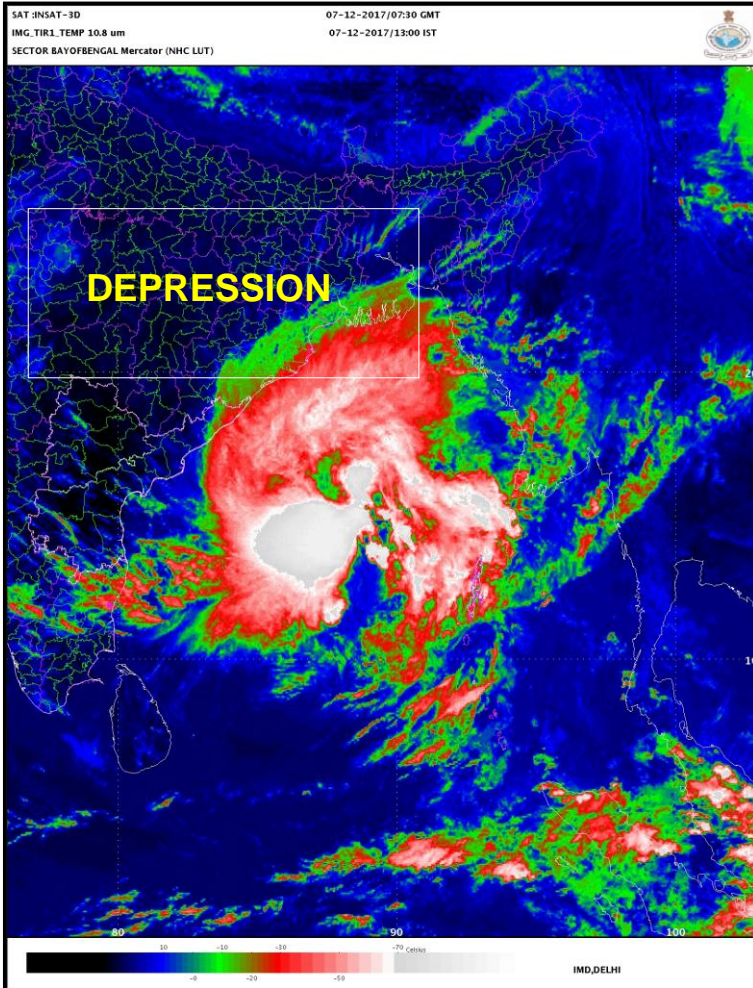
**Action suggested:**

- Fishermen along and off Andaman Islands are advised not to venture into sea till the forenoon of 8<sup>th</sup> December and fishermen along and off Nicobar Islands are advised not to venture into deep sea during the same period.
- Fishermen along and off north Tamil Nadu and south Andhra Pradesh coasts are advised not to venture into deep sea during 7<sup>th</sup> to 8<sup>th</sup> December and fishermen along and off north Andhra Pradesh and Odisha coasts are advised not to venture into sea till 9<sup>th</sup> December morning.

**Next bulletin will be issued at 2030 hours IST of 07<sup>th</sup> December 2107**

**(Neetha K Gopal)  
Scientist-E  
RSMC New Delhi**

*Copy to: CRS Pune/ ACWC Chennai/ Kolkata/ MC Hyderabad/ Bhubaneswar*



**Spatial rainfall distribution: Isolated: <25%, A few: 26-50%, Many: 51-75%, Most: 76-100%**  
**Rainfall amount (mm): Heavy rain: 64.5 – 115.5, Very heavy rain: 115.6 – 204.4, Extremely heavy rain: 204.5 or more.**