



India Meteorological Department
Earth System Science Organisation
(Ministry of Earth Sciences)

BULLETIN NO. : 08 (BOB 08/2017)

TIME OF ISSUE: 1915 HOURS IST

DATED: 07.12.2017

FROM: INDIA METEOROLOGICAL DEPARTMENT (FAX NO. 24643965/24699216/24623220)

TO: CONTROL ROOM, NDM, MINISTRY OF HOME AFFAIRS (FAX.NO. 23093750)

CONTROL ROOM NDMA (FAX.NO. 26701729)

CABINET SECRETARIAT (FAX.NO.23012284)

PS TO HON'BLE MINISTER FOR S & T AND EARTH SCIENCES (FAX NO.23316745)

SECRETARY, MOES, (FAX NO. 24629777)

SECRETARY, DST (FAX NO. 26863847/-2418)

H.Q. (INTEGRATED DEFENCE STAFF AND CDS) (FAX NO. 23005137/23005147)

DIRECTOR GENERAL, DOORDARSHAN (23385843)

DIRECTOR GENERAL, AIR (25843825)

PIB MOES (FAX NO. 23389042)

UNI (FAX NO. 23355841)

D.G. NATIONAL DISASTER RESPONSE FORCE (NDRF) (FAX NO. 26105912)

DIRECTOR, PUNCTUALITY, INDIAN RAILWAYS (FAX NO. 23388503)

CHIEF SECRETARY, GOVT. OF TAMILNADU (FAX NO. 044-25672304)

CHIEF SECRETARY, GOVT. OF ANDHRA PRADESH (FAX NO. 040-23456137)

CHIEF SECRETARY, GOVT. OF PUDUCHERRY (FAX NO. 0413-2337575)

CHIEF ADMINISTRATOR, ANDAMAN AND NICOBAR ISLANDS (FAX NO. 03192-232656)

CHIEF SECRETARY, GOVT. OF ODISHA (FAX NO. 0674-2536660)

CHIEF SECRETARY, GOVT. OF WEST BENGAL (FAX NO. 033-22144328)

Sub: Depression over Southeast and adjoining central Bay of Bengal

The **Depression** over southeast Bay of Bengal & neighbourhood moved further north-northwestwards with a speed of about 11 kmph during past 6 hours and lay centred at 1730 hrs IST of today, the 07 December, 2017 over southeast and adjoining central Bay of Bengal near Latitude 12.8° N and Longitude 87.7 °E, about 770 km south-southeast of Gopalpur and 800 km to the east-southeast of Machilipatnam. The system is very likely to move north-northwestwards and reach north Andhra Pradesh and south Odisha coasts around 9th December morning. The system is likely to intensify further into a deep depression during next 24 hours. However, there is a probability of slight weakening of the system when it reaches near north Andhra Pradesh and south Odisha coasts around 9th December morning.

Warnings:

Heavy Rainfall:

- Light to moderate rainfall at most places over Andaman Islands and at a few places over Nicobar Islands very likely during next 24 hours.
- Rainfall at most places with heavy falls at isolated places very likely over north Andhra Pradesh on 8th and 9th, over Odisha during 8th to 10th, over coastal districts of West Bengal on 8th December, 2017.

Wind:

- Squally winds speed reaching 40-50 kmph gusting to 60 kmph very likely over and around Andaman Islands during next 24 hours and decrease thereafter.
- Squally winds speed reaching 40-50 kmph gusting to 60 kmph very likely to prevail along and off north Andhra Pradesh and Odisha coasts from 7th evening to 9th December morning and decrease thereafter.

Spatial rainfall distribution: Isolated: <25%, A few: 26-50%, Many: 51-75%, Most: 76-100%

Rainfall amount (mm): Heavy rain: 64.5 – 115.5, Very heavy rain: 115.6 – 204.4, Extremely heavy rain: 204.5 or more.

Sea Condition:

- Sea condition would be rough to very rough around Andaman Islands during next 24 hours.
- Sea condition would be rough to very rough along and off north Andhra Pradesh and Odisha coasts from 7th evening to 9th December morning.

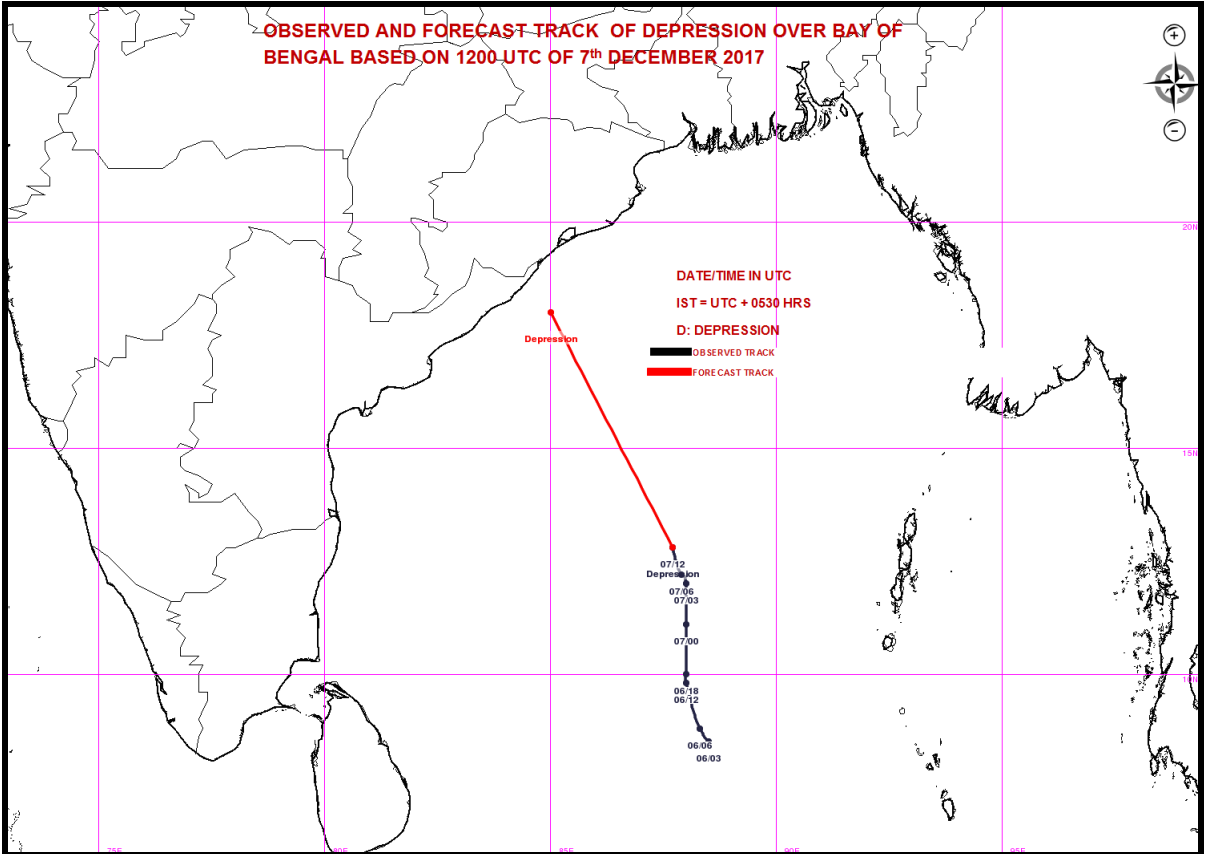
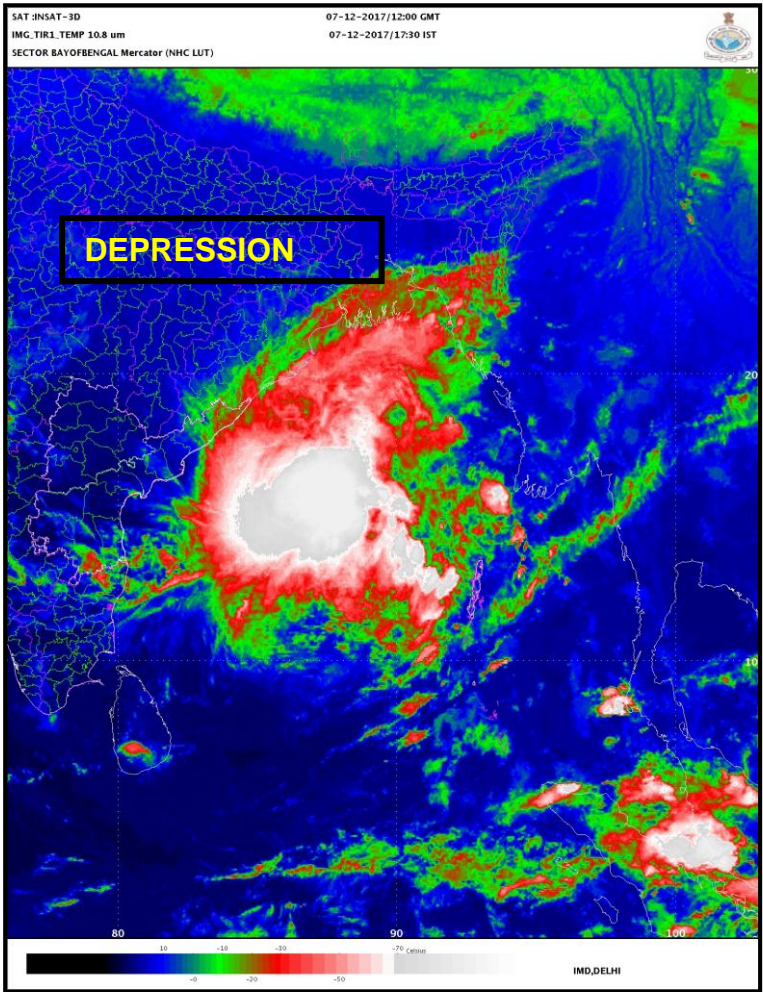
Action suggested:

- Fishermen along and off Andaman Islands are advised not to venture into sea till the forenoon of 8th December and fishermen along and off Nicobar Islands are advised not to venture into deep sea during the same period.
- Fishermen along and off north Tamil Nadu and south Andhra Pradesh coasts are advised not to venture into deep sea during 7th to 8th December and fishermen along and off north Andhra Pradesh and Odisha coasts are advised not to venture into sea till 9th December morning.

Next bulletin will be issued at 0230 hours IST of 08th December 2107

**(Neetha K Gopal)
Scientist-E
RSMC New Delhi**

Copy to: CRS Pune/ ACWC Chennai/ Kolkata/ MC Hyderabad/ Bhubaneswar



Spatial rainfall distribution: Isolated: <25%, A few: 26-50%, Many: 51-75%, Most: 76-100%
Rainfall amount (mm): Heavy rain: 64.5 – 115.5, Very heavy rain: 115.6 – 204.4, Extremely heavy rain: 204.5 or more.