



**REGIONAL SPECIALISED METEOROLOGICAL CENTRE-TROPICAL CYCLONES, NEW DELHI
TROPICAL WEATHER OUTLOOK**

DEMS-RSMC TROPICAL CYCLONES NEW DELHI DATED 12.10.2017

TROPICAL WEATHER OUTLOOK FOR NORTH INDIAN OCEAN (THE BAY OF BENGAL AND ARABIAN SEA) VALID FOR NEXT 72 HOURS ISSUED AT 0600 UTC OF 12.10.2017 BASED ON 0300 UTC OF 12.10.2017.

BAY OF BENGAL & ANDAMAN SEA:

SCATTERED LOW/MEDIUM CLOUDS WITH EMBEDDED MODERATE TO INTENSE CONVECTION LIE OVER SOUTH BAY OF BENGAL SOUTH OF LATTITUDE 14.0°N AND WEAK TO MODERATE CONVECTION LIE OVER EAST CENTRAL BAY OF BENGAL, ANDAMAN SEA, ARAKAN COAST AND TENASSERIM COAST.

PROBABILITY OF CYCLOGENESIS DURING NEXT 72 HRS:

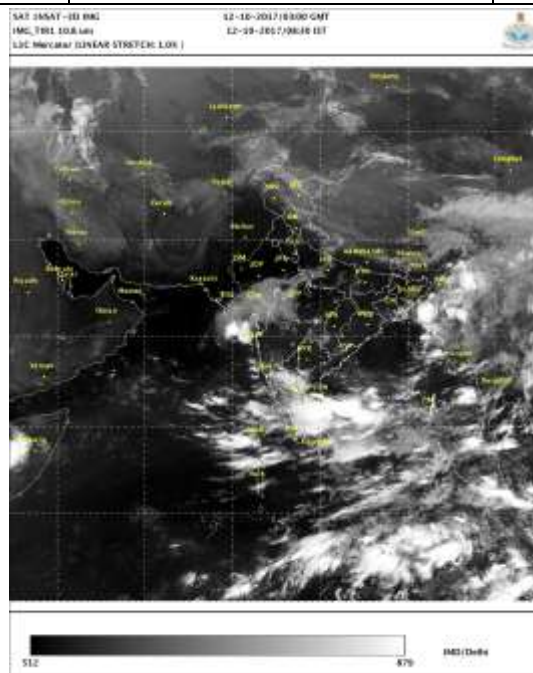
24 HOURS	24-48 HOURS	48-72 HOURS
NIL	NIL	NIL

ARABIAN SEA:-

ACCORDING TO SATELLITE IMAGERY, BROKEN LOW/MEDIUM CLOUDS WITH EMBEDDED MODERATE TO INTENSE CONVECTION LIE OVER EASTCENTRAL & ADJOINING NORTHEAST ARABIAN SEA AND SOUTH GUJARAT IN ASSOCIATION WITH A LOW LEVEL CYCLONIC CIRCULATION (LLCC) OVER THE AREA. SCATTERED LOW/MEDIUM CLOUDS WITH EMBEDDED ISOLATED MODERATE TO INTENSE CONVECTION LIE OVER EASTCENTRAL AND SOUTHEAST ARABIAN SEA OFF SOUTH GUJARAT COAST.

PROBABILITY OF CYCLOGENESIS DURING NEXT 72 HRS:

24 HOURS	24-48 HOURS	48-72 HOURS
NIL	NIL	NIL



PROBABILITY OF CYCLOGENESIS (FORMATION OF DEPRESSION)

NIL: 0%, LOW: 1-25%, FAIR: 26-50%, MODERATE: 51-75% AND HIGH: 76-100%

Contact: Phone: (91) 11-24652484 FAX: (91) 11-24623220 e-mail :cwdhq2008@gmail.com