



**REGIONAL SPECIALISED METEOROLOGICAL CENTRE-TROPICAL CYCLONES, NEW DELHI  
TROPICAL WEATHER OUTLOOK**

**DEMS-RSMC TROPICAL CYCLONES NEW DELHI DATED 16.04.2018**

**TROPICAL WEATHER OUTLOOK FOR NORTH INDIAN OCEAN (THE BAY OF BENGAL AND ARABIAN SEA) VALID FOR NEXT 72 HOURS ISSUED AT 0600 UTC OF 16.04.2018 BASED ON 0300 UTC OF 16.04.2018.**

**BAY OF BENGAL:**

SCATTERED LOW / MEDIUM CLOUDS WITH EMBEDDED INTENSE TO VERY INTENSE CONVECTION LIE OVER SOUTH BAY OF BENGAL SOUTH OF LATTITUDE 8.5N EAST OF LONGITUDE 83.0E ADJOINING SOUTH ANDAMAN SEA.

**PROBABILITY OF CYCLOGENESIS DURING NEXT 72 HRS:**

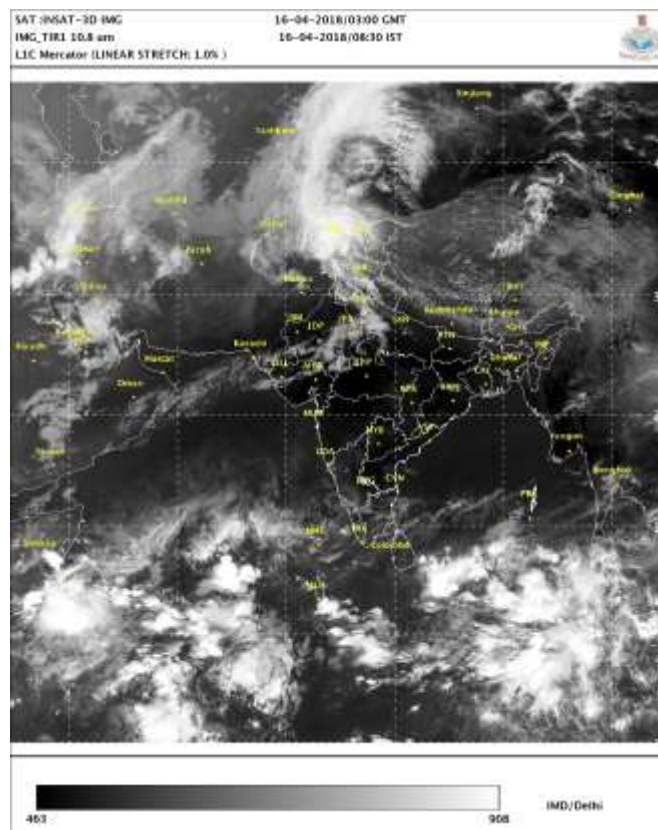
24 HOURS	24-48 HOURS	48-72 HOURS
NIL	NIL	NIL

**ARABIAN SEA:**

SCATTERED LOW / MEDIUM CLOUDS WITH EMBEDDED INTENSE TO VERY INTENSE CONVECTION LIE OVER CENTRAL PARTS OF SOUTH ARABIAN SEA .

**PROBABILITY OF CYCLOGENESIS DURING NEXT 72 HRS:**

24 HOURS	24-48 HOURS	48-72 HOURS
NIL	NIL	NIL



**PROBABILITY OF CYCLOGENESIS (FORMATION OF DEPRESSION)**

**NIL: 0%, LOW: 1-25%, FAIR: 26-50%, MODERATE: 51-75% AND HIGH: 76-100%**

**Contact: Phone: (91) 11-24652484 FAX: (91) 11-24623220 e-mail :cwdhq2008@gmail.com**